

# WILLIAM GRAY

WILLIAMGRAY.COM @MRWILLIAMGRAY BY MEYER DAVIS



PRODUCT: Teddy Daybed

COLLECTION: TEDDY

MANUFACTURER: STELLAR WORKS

CURATED BY:  
2020, N.Y.C.

*William Gray*

WG

©2023 WILLIAM GRAY INC.

# Teddy Daybed

PRODUCT ID WG-S610

DESCRIPTION The Teddy Daybed rounds out its family of lounge furniture, envisioned as a finishing piece to define the end of a bed or compliment a sitting arrangement. Continuous vectors define its planes, which balances a traditional vernacular with a contemporary silhouette. This daybed is available in a range of finishes, COM/COL, and customizable upon request.

DIMENSIONS D x W x H x SH  
28.3 x 72 x 20.3 x 17 in  
718 x 1829.0 x 515 x 432 mm

MATERIAL OPTIONS Available in all Stellar Works finishes, graded in fabrics & leathers.

WOOD  
a. Natural Oak  
b. Gray Oak  
c. Dark Brown Oak  
d. Onyx Oak  
e. Natural Walnut  
f. Soap Walnut



a



b



c



d



e



f

# Teddy Daybed

---



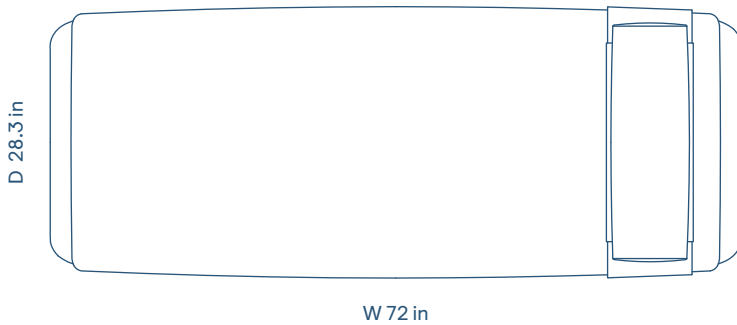
# Teddy Daybed



Shown in Maharam Travel Mohair Supreme, Alaska Suede and Walnut Legs

# Teddy Daybed

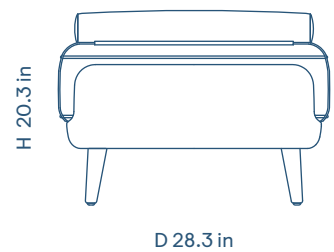
Plan



Front Elevation



Side Elevation



# Materials Collection: Leathers

## LEATHER SAMPLES A

New Castle  
(Aniline Leather)



Black New  
65



Charcoal New  
1365



Dark Brown New  
25



Green New  
35

## LEATHER SAMPLES B

Crystal  
(Aniline Leather)



Baltic  
3814



Black  
9893



Chestnut  
8042



Wolf  
3386

Milano  
(Pigmented Leather)



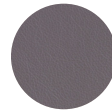
Black  
2522



Milano Brown  
0972



Milano Ivory  
5020



Milano Quartz  
2123

## LEATHER SAMPLES C

Bellagio  
(Pigmented Leather)



Black  
7925



Charcoal  
4502



Cream  
8805



Dark Brown  
4501



Quartz  
5070

## PU LEATHER

Omega  
(Surface 100%  
Polyurethane,  
Base 100% Polyester)



Black



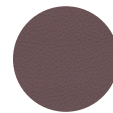
Dark Brown



Grey



Ice



Tabac



Toffee

## SADDLE LEATHER



Black



Nude



Brown

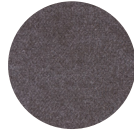
# Materials Collection: Fabrics

## FABRIC SAMPLES C

Cotton  
(100% Cotton)



414



4114

Era  
(100% Polyester)



Cse 02



Cse 13



Cse 14



Cse 45

Linen  
(100% Linen)



421



422

Manhattan  
(100% PES)



600



801



804



805

Revive 1  
(100% recycled FR)



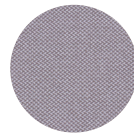
164



184

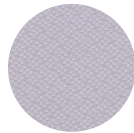


194

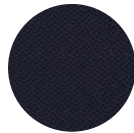


324

Revive 2  
(100% recycled polyester FR)



133



183



193



383

Ruby  
(100% PES)



104



617



800

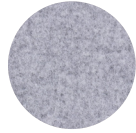


805

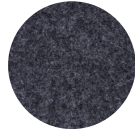
# Materials Collection: Fabrics

## FABRIC SAMPLES A

Divina Melange  
(100% New Wool)



120



170



180



280

Harald  
(100% Cotton)



182



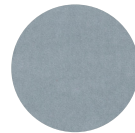
242



283

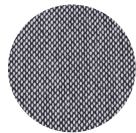


382

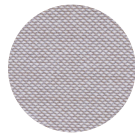


823

Steelcut Trio  
(90% New Wool, 10% Nylon)



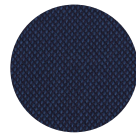
124



213



383



796

## FABRIC SAMPLES B

Field  
(100% Trevira CS)



142



182



693



793

Main line flax  
(70% virgin wool, 30% flax)



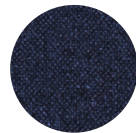
16



20



28

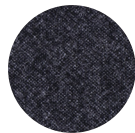


36

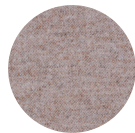
Melange Nap



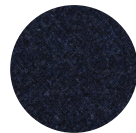
111



191

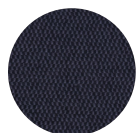


211



791

Messenger  
(70% virgin wool, 30% flax)



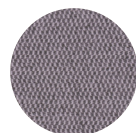
Ash 077



Bayou 008



Fossil 076



Husk 081