

# WILLIAM GRAY



PRODUCT: Hugo Slim Dining Chair

COLLECTION: Hugo

MANUFACTURER: STELLAR WORKS

CURATED BY:  
2020, N.Y.C.

*William Gray*

WG

# Hugo Slim Dining Chair

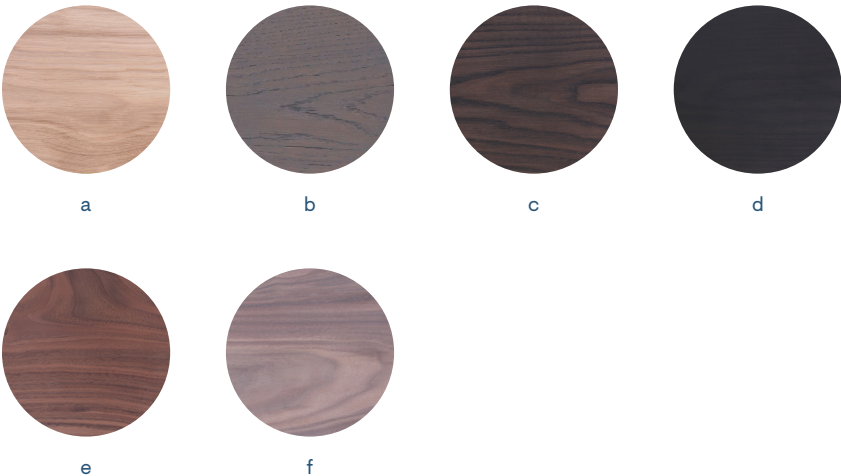
PRODUCT ID	WG-S220
------------	---------

DESCRIPTION	This modern take on a Campaign Chair has been meticulously detailed for dining. The result is a workhorse piece of furniture with a light and nimble footprint. Hugo highlights both sides of a leather hide, adding a fresh layer of texture. A playful strap marries back to the seat. Hugo Slim is designed with a sleeker profile, more appropriate for residential use. Available in a range of finishes, COM/COL, and customizable upon request, Hugo can sit anywhere.
-------------	---

DIMENSIONS	D × W × H × SH 21.1 × 18 × 29.7 × 18.3 in 536 × 456 × 754 × 465 mm
------------	--

MATERIAL OPTIONS	Available in all Stellar Works finishes, graded in fabrics & leathers.
------------------	--

WOOD	a. Natural Oak b. Gray Oak c. Dark Brown Oak d. Onyx Oak e. Natural Walnut f. Soap Walnut
------	--



# Hugo Slim Dining Chair



Shown in New Castle Black Leather and Natural Walnut

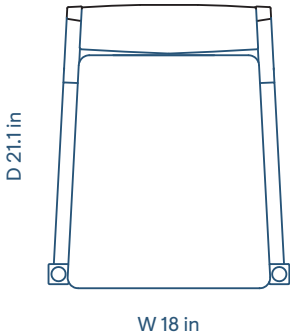
# Hugo Slim Dining Chair



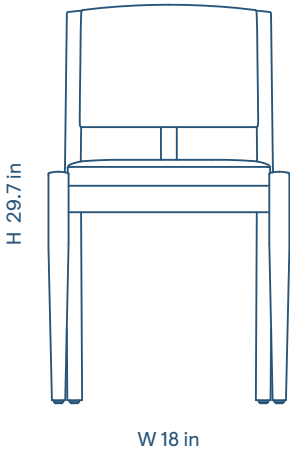
Shown in New Castle Black Leather and Natural Walnut

# Hugo Slim Dining Chair

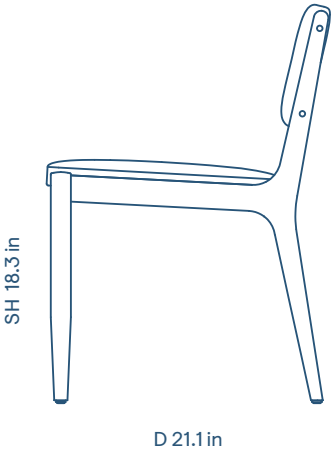
Plan



Front Elevation



Side Elevation



# Materials Collection: Leathers

## LEATHER SAMPLES A

New Castle  
(Aniline Leather)



Black New  
65



Charcoal New  
1365



Dark Brown New  
25



Green New  
35

## LEATHER SAMPLES B

Crystal  
(Aniline Leather)



Baltic  
3814



Black  
9893



Chestnut  
8042



Wolf  
3386

Milano  
(Pigmented Leather)



Black  
2522



Milano Brown  
0972



Milano Ivory  
5020



Milano Quartz  
2123

## LEATHER SAMPLES C

Bellagio  
(Pigmented Leather)



Black  
7925



Charcoal  
4502



Cream  
8805



Dark Brown  
4501



Quartz  
5070

## PU LEATHER

Omega  
( Surface 100%  
Polyurethane,  
Base 100% Polyester )



Black



Dark Brown



Grey



Ice



Tabac



Toffee

## SADDLE LEATHER



Black



Nude



Brown

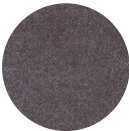
# Materials Collection: Fabrics

## FABRIC SAMPLES C

Cotton  
(100% Cotton )

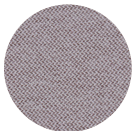


414



4114

Era  
(100% Polyester )



Cse 02



Cse 13



Cse 14



Cse 45

Linen  
(100% Linen )



421



422

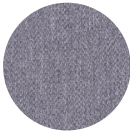
Manhattan  
(100% PES )



600



801



804



805

Revive 1  
(100% recycled FR )



164



184

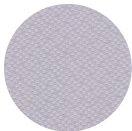


194



324

Revive 2  
(100% recycled polyester FR)



133



183



193



383

Ruby  
(100% PES )



104



617



800

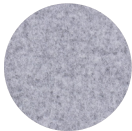


805

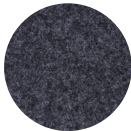
# Materials Collection: Fabrics

## FABRIC SAMPLES A

Divina Melange  
( 100% New Wool )



120



170



180



280

Harald  
( 100% Cotton )



182



242



283

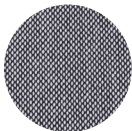


382

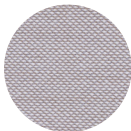


823

Steelcut Trio  
( 90% New Wool, 10% Nylon )



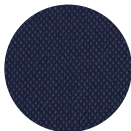
124



213



383



796

## FABRIC SAMPLES B

Field  
( 100% Trevira CS )



142



182



693



793

Main line flax  
( 70% virgin wool, 30% flax )



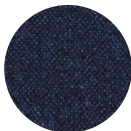
16



20



28

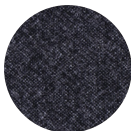


36

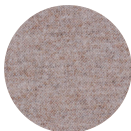
Melange Nap



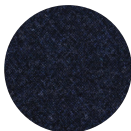
111



191



211



791

Messenger  
( 70% virgin wool, 30% flax )



Ash 077



Bayou 008



Fossil 076



Husk 081